



VALENTIN IMPERIAL

RIVIERA MAYA

ADULTS ONLY

# ROOM CATEGORIES

[valentinmaya.com](http://valentinmaya.com)

## JUNIOR SUITES

### Deluxe Junior Suite (208 units)

Located in buildings 3, 4 and 5 with just a few junior suites scattered in buildings 1 and 2. King size bed or two double beds on request. **Max 3 pax.**

### Silver Junior Suite (112 units)

Located in building 1 and 2. King size beds only. **Max 2 pax.**

### Golden Junior Suite (49 units)

Located on the 2nd floor of buildings 6, 7 and 8. King size bed or two double beds on request. **Max 3 pax.**

### Golden Superior Junior Suite (36 units)

Located on the top floor of buildings 6, 7 and 8. King size beds only. **Max 2 pax.**

### Golden Swim-Up Junior Suite (47 units)

Located on the ground floor of buildings 6, 7 and 8 with a furnished terrace. King size beds only. **Max 2 pax.**

### Emerald Junior Suite (72 units)

Located in buildings 9 to 14. King size beds only. **Max 2 pax.**

## DUNAS PRIVATE POOL

### Dunas Private Pool Ocean View Suite (18 units)

Located on the ground floor of buildings 15, 16 and 17. King size beds only. In-room Private Pool. **Max 2 pax.**

### Dunas Private Pool Ocean View Top Floor Suite (18 units)

Located on the top floor of buildings 15, 16 and 17. King size beds only. In-room Private Pool. **Max 2 pax.**

## ONE-BEDROOM SUITE

### Onyx One-Bedroom Suite (6 units)

Corner penthouses located in buildings 1 to 5.

Valentin Privé amenities OPTIONAL. King size beds only, separate living room and dining room area. **Max 2 pax.**

### Diamond One-Bedroom Suite (6 units)

Corner penthouses located in buildings 6 to 8.

Valentin Privé amenities OPTIONAL. King size beds only, separate living room and dining room area. An extra bed can be added. **Max 3 pax.**

### Imperial One-Bedroom Privé Suite (2 units)

Corner penthouses located in buildings 4 and 5.

Valentin Privé amenities included. King size beds only, separate living room and dining room area. An extra bed can be added. **Max 3 pax.**

### Wedding Suite (1 unit)

Corner penthouse located in building 2. King size bed only. **Max 2 pax.**

### Meeting Room: El Salón de la Hacienda - Social Suite (1 unit)

Corner penthouse located in building 1. **Max 30 guests.**

# ACCOMMODATIONS

**Buildings 1 to 8** have three stories and elevators  
*Each building has one adapted rooms (8 in total)*  
**Buildings 9 to 14\*** have two stories, no elevators.

*\*Please refer to the resort map for more information.*

All accommodations (including room balconies and terraces), indoor and outdoor common areas are non-smoking.

**Smoking is permitted in the designated areas only.**

## Common features for all room categories

- Private terrace or balcony
- Full marble bathroom
- Jetted bathtub
- Separate shower cabin & toilet
- Local toiletries made with natural ingredients
- Lighted vanity mirror
- Hair dryer
- Digital bathroom weight scale
- Bathrobes & slippers
- Phone in bathroom
- Satellite widescreen TV
- Air conditioning with in-room climate control
- Ceiling fan
- Direct dial telephone with voicemail
- Complimentary Wi-Fi
- Electronic in-room safe (up to 15" laptop size)
- Nespresso coffee maker
- Minibar restocked daily with soft drinks, water, juice, beer, and a snack
- Iron & ironing board in Deluxe Jr Suites
- Garment steamer in higher categories
- Umbrella
- Extra pillow
- Beach towels
- Turn down Service

**524 JUNIOR SUITES**

# DELUXE JUNIOR SUITE

## 208 Units - 516 SQ FT

Lead category.  
Ideal for friends and family sharing a room.

- Buildings 3, 4 and 5
- 3 stories buildings with elevators
- Tropical jungle view
- 2 double beds or 1 king bed on request
- No double beds on the top floor
- Wireless Bluetooth speaker system
- Bathroom with 1 sink and jetted bathtub for 1 person
- Separate toilet and shower enclosed behind frosted glass doors
- Extra bed available on request
- Max occupancy: 3



# SILVER JUNIOR SUITE

## 112 Units - 516 SQ FT

Ideal for honeymoon, anniversary, romance, and central locations.

- Buildings 1 and 2
- 3 stories buildings with elevators
- Tropical jungle view
- King bed only
- 55" TV
- Wireless Bluetooth speaker system
- Open concept bathroom with sheer curtain
- 2 sinks and jetted bathtub for 2 persons
- Separate toilet and thermostatic rain shower enclosed behind frosted glass doors for more privacy
- Max occupancy: 2



## GOLDEN AREA

Largest Junior Suites on property  
Dedicated room category on each floor  
Pool view



VALENTIN IMPERIAL

RIVIERA MAYA

ADULTS ONLY

# GOLDEN JUNIOR SUITE

## 49 Units - 656 SQ FT

Quiet spaces and pool views. Perfect for triple occupancy.

- Buildings 6, 7 and 8. Located on 2nd (middle) floor
- 3 stories buildings with elevators
- Pool view
- Harmonious décor with serene and natural wood accents
- 2 double beds or king bed on request
- Living room area
- One 55" and one 42" flat screen TVs
- Wireless Bluetooth speaker system
- Premium Wi-Fi
- Digital display panel for lights, ceiling fan, A/C, "do not disturb" or "clean the room"
- "Open concept" bathroom with french doors that open onto the entire room
- 2 sinks and double jetted bathtub
- Separate toilet with bidet and thermostatic rain shower enclosed behind frosted glass doors
- Laminated tempered glass doors
- Extra bed available on request
- Max occupancy: 3

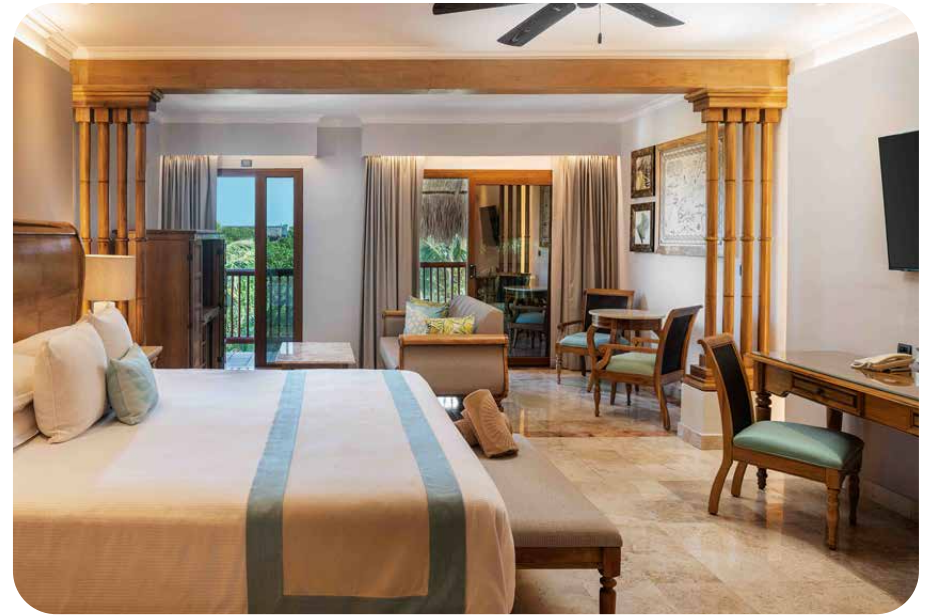


# GOLDEN SUPERIOR JUNIOR SUITE

## 36 Units - 656 SQ FT

Quiet spaces and great views, ideal for honeymoon, anniversaries and romance.

- Buildings 6, 7 and 8. Located on the 3rd (top) floor
- 3 stories buildings with elevators
- Pool view
- Harmonious décor with serene and natural wood accents
- King bed only
- Living room area
- One 55" and one 42" flat screen TVs
- Wireless Bluetooth speaker system
- Premium Wi-Fi
- Digital display panel for lights, ceiling fan, A/C, "do not disturb" or "clean the room"
- "Open concept" bathroom with french doors that open onto the entire room
- 2 sinks and double jetted bathtub
- Separate toilet with bidet and thermostatic rain shower enclosed behind frosted glass doors
- Laminated tempered glass doors
- Max occupancy: 2



# GOLDEN SWIM UP JUNIOR SUITE

## 47 Units - 656 SQ FT

Direct access to pool. Ideal for honeymoon, anniversaries and romance.

- Buildings 6, 7 and 8. Located on ground floor with private terrace with lounge chairs
- 3 stories buildings with elevators
- Pool view
- Harmonious décor with serene and natural wood accents
- King bed only
- Living room area
- One 55" and one 42" flat screen TVs
- Wireless Bluetooth speaker system
- Premium Wi-Fi
- Digital display panel for lights, ceiling fan, A/C, "do not disturb" or "clean the room"
- "Open concept" bathroom with french doors that open onto the entire room
- 2 sinks and double jetted bathtub
- Separate toilet with bidet and thermostatic rain shower enclosed behind frosted glass doors
- Laminated tempered glass doors
- Max occupancy: 2



# EMERALD JUNIOR SUITE

72 Units - 624 SQ FT

Ideal for honeymoon, anniversaries and romance.  
Travel agents favorite.

- Buildings 9 to 14
- 2 stories buildings, no elevators
- Partial ocean view
- Decor with caribbean accents
- King bed only
- Bedroom window with blackout curtain
- Terrace with hammock or balcony
- Digital control panel for A/C, ceiling fan and blackout curtain 55" TV
- Wireless Bluetooth speaker system
- Premium Wi-Fi
- Digital "do not disturb" / "please clean room" signs
- Bathroom with 2 sinks
- Oversized Venetian tiles jetted bathtub - Quick fill.  
With enhanced panoramic views
- Wet room with double rain showers
- Grohe SmartControl Thermostat
- Motorized blinds
- Max occupancy: 2
- Mobile phone keycard system available



**36 DUNAS PRIVATE POOL SUITES**

# DUNAS PRIVATE POOL OCEAN VIEW SUITE

18 Units - 678 SQ FT

Ideal for guest seeking ultimate luxury and pampering.

- Buildings 15, 16 and 17.
- Located on the ground floor
- Décor created by renowned mexican designers
- Spacious terrace (108 SQ. FT.) with outdoor furniture (3 armchairs + table)
- In-room private pool (11 FT. x 7 FT., 3 FT. depth) + additional 32 SQ. FT. pool terrace
- Ocean views from terrace and pool
- Delivery Secret Box
- King-size bed and elegant living area with sofa, armchair & coffee table
- Open-concept bathroom with air massage tub, double vanity, rainfall & handheld shower, and luxury bathroom fittings
- Ceiling TV lift (55" Samsung TV), minibar, luggage unit
- Electronic safe, wireless sound system & complimentary Wi-Fi
- Motorized blackout blinds, ceiling fan & cool air conditioning



# DUNAS PRIVATE POOL OCEAN VIEW TOP FLOOR SUITE

## 18 Units - 689 SQ FT

Ideal for guest seeking ultimate luxury and pampering.

- Buildings 15, 16 and 17.
- Located on the top floor (no elevator)
- Décor created by renowned mexican designers
- Spacious terrace (118 SQ. FT.) with outdoor furniture (2 armchairs + table, plus 1 more armchair on pool terrace)
- In-room private pool (11 FT. x 7 FT., 3 FT. depth) + additional 32 SQ. FT. pool terrace
- Infinity ocean views from terrace and pool
- Delivery Secret Box
- King-size bed and elegant living area with sofa, armchair & coffee table
- Open-concept bathroom with air massage tub, double vanity, rainfall & handheld shower, and luxury bathroom fittings
- Ceiling TV lift (55" Samsung TV), minibar, luggage unit
- Electronic safe, wireless sound system & complimentary Wi-Fi
- Motorized blackout blinds, ceiling fan & cool air conditioning



# **15 ONE-BEDROOM SUITES**

---

# ONYX ONE-BEDROOM SUITE

## 6 Units - 2152 SQ FT

Ideal for guest seeking ultimate luxury and pampering.

- Buildings 1 to 5. Corner penthouse located on top floor (3rd floor)
- Décor created by renowned mexican designers
- King bed only
- Separate living room and dining area
- Oversized outdoor terrace with loungers and cozy seating area
- Bluetooth wireless speaker system
- 300-megabit broadband connection
- 1 fully equipped bathroom with top-of-the-line bath amenities, including relaxing salts and aromatherapy
- Thermostatic mixer taps
- 2 jetted bathtubs: indoor and outdoor
- Max occupancy: 2
- **Additional inclusions:**
  - Daily gourmet amenities
  - EliteBAR offering a varied selection of premium and imported beers, plus an exclusive wine cellar



# DIAMOND ONE-BEDROOM SUITE

## 6 Units - 1615 SQ FT

Ideal for guest seeking ultimate luxury and pampering.

- Buildings 6, 7 and 8 of the Golden section. Corner penthouse located on the top floor (3rd floor) with Golden pool view
- Décor created by renowned mexican designers
- King bed only
- Separate living room and dining area
- Cozy balcony with shade and loungers
- Bluetooth wireless speaker system
- 300-megabit broadband connection
- 2 fully equipped bathrooms with top-of-the-line bath amenities, including relaxing salts and aromatherapy
- Thermostatic mixer taps
- 2 jetted bathtubs: indoor and outdoor
- Max occupancy: 3 with extra bed
- **Additional inclusions:**
  - Daily gourmet amenities
  - EliteBAR offering a varied selection of premium and imported beers, plus an exclusive wine cellar



# IMPERIAL PRIVÉ ONE-BEDROOM SUITE

2 Units - 2152 SQ FT

Ideal for guest seeking ultimate luxury and pampering.

- Buildings 4 and 5. Corner penthouse located on the top floor (3rd floor)
- Décor created by renowned mexican designers
- King bed only
- Separate living room and dining area
- Oversized outdoor terrace with loungers and cozy seating area
- Bluetooth wireless speaker system
- 300-megabit broadband connection
- 1 fully equipped bathroom and 1 powder room
- Main bathroom equipped with top-of-the-line bath amenities, including relaxing salts and aromatherapy
- Thermostatic mixer taps
- 2 jetted bathtubs: indoor and outdoor
- Max occupancy: 3 with extra bed
- **Additional inclusions:**
  - Valentin Privé included
  - Daily gourmet amenities
  - EliteBAR offering a varied selection of premium and imported beers, plus an exclusive wine cellar
  - One dinner for 2 at L'Olivo's Chef's Table



# WEDDING SUITE

## 1 Unit - 2152 SQ FT

An exclusive haven designed for brides to ensure that every aspect of their wedding experience is imbued with magic and elegance.

- Building 2. Corner penthouse located on the 3rd floor
- Tropical Jungle View
- 1 King bed
- Living area equipped with premium amenities, including makeup mirrors and a dressing pedestal, to make every bride's preparation moment truly special.
- Additionally, the suite features a beverage center, wine cellar, Nespresso coffee maker, and a full bar.
- The luxury bathroom boasts a stunning jetted bathtub, while the spacious bedroom is adorned with a comfortable sofa and a desk.
- The private terrace offers breathtaking views and a jacuzzi for some relaxing downtime.
- Sleeps 2 guests + 6 extra guests from bridal party visiting
- Up to 8 Guests

**Brides can select from two packages that are specially designed to make their fairy tale wedding come true.**



# MEETING ROOM

## El Salón de la Hacienda - Social Suite

(2152 sq. ft. / 200 m<sup>2</sup>)

Large suite divided into three interconnected areas that can be used together or separately, depending on the event's needs:

**Dining or meeting area:** ideal for private meals, executive meetings, or presentations.

**Lounge with bar:** perfect for relaxing, socializing, or enjoying a personalized bar experience.

**Outdoor lounge terrace:** an open and welcoming space, great for casual events or al fresco celebrations.

- Flexible day use packages
  - Including access to the space for up to 5 hours with refreshments, bottled water, and herbal teas.
- Customize your booking according to your needs with (\$):
  - Extra time or additional services
  - Every detail based on the group size, preferences, and celebration style
  - Taco station and bar service
  - Cocktail hour and international open bar
  - Four-course plated dinners with premium mixology
- Up to 30 Guests



# VALENTIN PRIVÉ

Add to any Junior Suite or Onyx and Diamond One-Bedroom Suites with a minimum 3-night stay

Public Rate: 85.00 USD per person/night

## Inclusions:

- Private check-in and check-out at the Valentin Privé Lounge.
- Pre-arrival concierge services at [vim.valentinprive@valentinmaya.com](mailto:vim.valentinprive@valentinmaya.com).
- Early check-in and late check-out, subject to availability.
- Bottle of sparkling wine upon arrival.
- Fruit basket and petit fours.
- In-room fresh flowers.
- In-room top shelf liquor and wine selection (menu available with the Valentin Privé concierge).
- Valentin beach bag.
- Lobster included at any of the "à la carte" restaurants (no extra fees).
- Restaurant reservations through the Valentin Privé concierge.
- Reserved Bali beds under guest name at pool or beach area.
- Exclusive access to Valentin Privé Lounge (7:00 a.m. to 11:00 p.m.).
  - Premium Wi-Fi.
  - Concierge service.
  - Ultra premium bar service.
  - Light snacks (7:00 a.m. - 9:00 p.m.).





- 1. Deluxe Junior Suites
- 2. Silver Junior Suites
- 3. Golden, Golden Superior & Golden Swim-Up Junior Suites
- 4. Emerald Junior Suites
- 5. Dunas Private Pool Suites
- 6. Reception, Restaurants, Bars, Spa
- 7. Beachfront Restaurant



**VALENTIN IMPERIAL**

**RIVIERA MAYA**

ADULTS ONLY

[valentinmaya.com](http://valentinmaya.com)